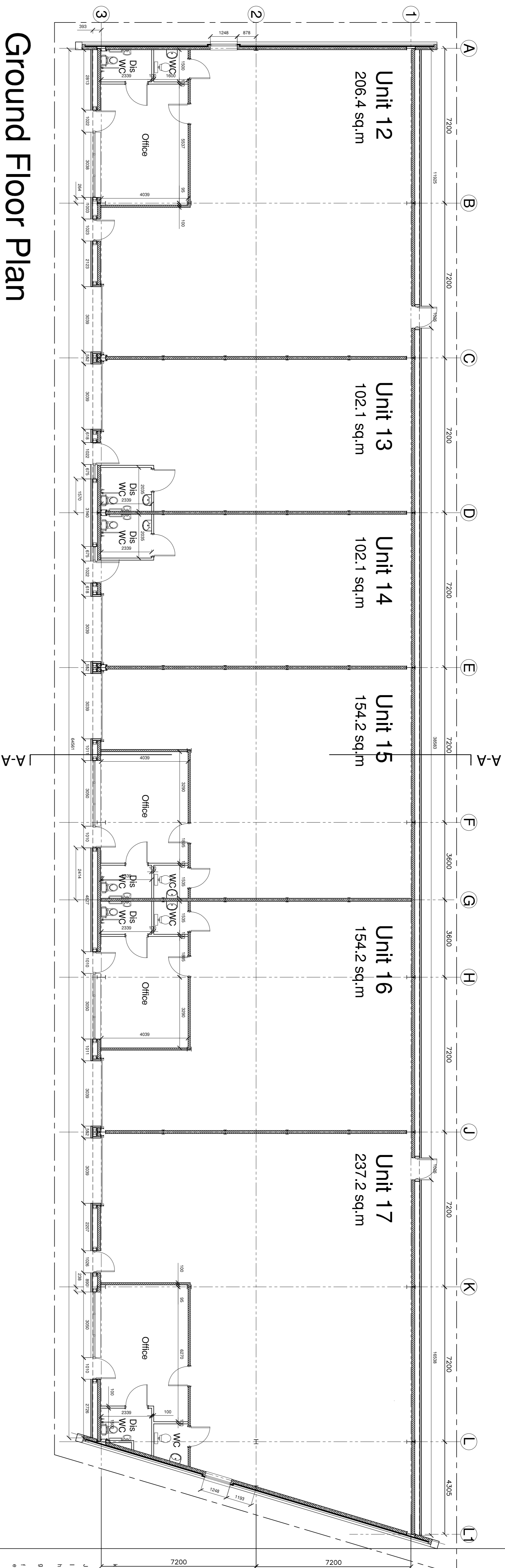


notes



Ground Floor Plan

- 03.09.08 Units renumbered in accordance with Fire Office requirements. Drawing title amended accordingly. scd/pe
- 06.09.08 Units Amalgamated. scd/pe
- 30.07.08 Scale changed to 1:100 @ A1 scd/pe
- 29.07.08 Drawings and Wall Setting-out scd/pe
- 28.07.08 Drawings and Wall Setting-out scd/pe
- 26.06.08 CONSTRUCTION ISSUE scd/pe
- 14.04.08 Small items revised and drawings updated to site. scd/pe
- 28.01.08 Various amendments. Area schedule omitted. TENDER ISSUE scd/pe
- 03.12.07 PLANNING ISSUE scd/pe
- 31.10.07 Offices added to Units 3d and 3e scd/pe
- 01.10.07 Updated Elevations BB/CG

revisions

CONSTRUCTION

status

10/09/07

date

1:1:00

scale @ A1

by/checked

DG/PE

checked

office

Liverpool



NORTHERN TRUST
Goldendale West
Stoke-on-Trent
Staffordshire

project

060206068-0027K

drawing no

WORKSPACE UNITS
Units 12-17 Plan

drawing title

SMC
DTR:UK
Architects and Designers

Architects and Designers

0 The Riverside, 50, Lower Parliament, Manchester, M1 2JY
Tel: +44(0)161 834 4667 Fax: +44(0)161 834 4668 email: manchester@smc-dtr.co.uk
0 54 North Street, Leeds, LS2 7RN
Tel: +44(0)113 244 0066 Fax: +44(0)113 244 0068 email: leeds@smc-dtr.co.uk
0 361, 363 & 365, Liverpool L3 9JF
Tel: +44(0)151 255 0132 Fax: +44(0)151 255 0132 email: liverpool@smc-dtr.co.uk
0 The Riverside, 50, Lower Parliament, Manchester, M1 2JY
Tel: +44(0)161 834 4674 Fax: +44(0)161 834 4671 email: liverpool@smc-dtr.co.uk
www.smc-dtr.co.uk